

**Dassault Systèmes  
(Head Office)**

10, Rue Marcel Dassault  
78140 Velizy-Villacoublay  
FRANCE  
Tel: 33 1 61626162

**Dassault Systèmes  
of America Corp.**

6320 Canoga Avenue  
Trillium East Tower  
Woodland Hills, CA  
91367-2526 – USA  
Tel: 1 818 999 2500

**Dassault Systèmes KK  
Asia Pacific**

Pier City Shibaura Bldg 10F  
3-18 Kaigan, Minato-Ku  
Tokyo 108-0022 – JAPAN  
Tel: 81 3 5442 4011

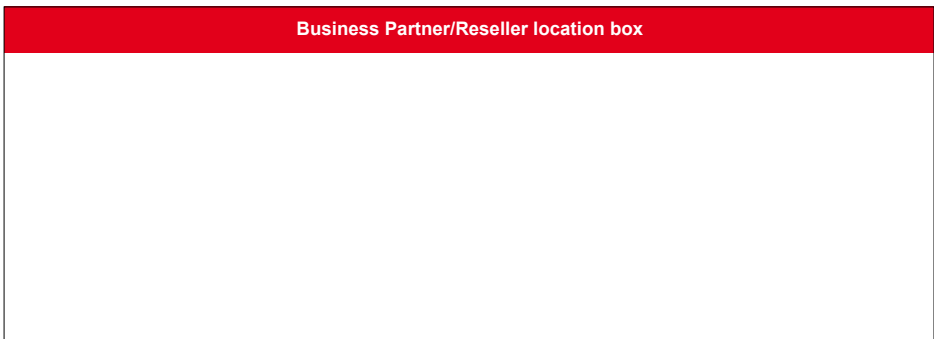


**About Dassault Systèmes**

As a world leader in 3D and Product Lifecycle Management (PLM) solutions, Dassault Systèmes brings value to more than 100,000 customers in 80 countries. A pioneer in the 3D software market since 1981, Dassault Systèmes develops and markets PLM application software and services that support industrial processes and provide a 3D vision of the entire lifecycle of products from conception to maintenance to recycling. The Dassault Systèmes portfolio consists of CATIA for designing the virtual product - SolidWorks for 3D mechanical design - DELMIA for virtual production - SIMULIA for virtual testing - ENOVIA for global collaborative lifecycle management, and 3DVIA for online 3D lifelike experiences. Dassault Systèmes' shares are listed on Euronext Paris (#13065, DSY.PA) and Dassault Systèmes' ADRs may be traded on the US Over-The-Counter (OTC) market (DASTY). For more information, visit <http://www.3ds.com>.

CATIA, DELMIA, ENOVIA, SIMULIA, SolidWorks and 3D VIA are registered trademarks of Dassault Systèmes or its subsidiaries in the US and/or other countries.

Trademark:  
© Dassault Systèmes, 2009. CATIA, DELMIA, ENOVIA, SIMULIA, SolidWorks and 3DVIA are registered trademarks of Dassault Systèmes or its subsidiaries in the US and/or other countries.



## SMARTTEAM ENGINEERING EXPRESS

WORK TOGETHER, LAUNCH FASTER





**Increasingly complex products and manufacturing processes multiply the challenges facing product engineers in day-to-day work. Product Lifecycle Management (PLM) solutions can meet these challenges, but are often demanding to implement and maintain. ENOVIA's SmarTeam Engineering Express fits the needs of the mid-market – making PLM powerful, quick and simple.**

**Rapidly developing multiple, complex and innovative products for a global market inevitably has its problems: time wasted searching for data; misunderstandings across development teams, errors and delays due to using out-of-date design versions, delays in delivering customer orders, costly rework orders and more.**

#### **Complex challenges. Simple solution.**

Product Lifecycle Management (PLM) software was designed to resolve these challenges. But it demanded hardware and software infrastructure that took a long time to specify and implement. To meet specific requirements, consultants had to be hired to guide customized installation and deployment of these solutions, involving large financial and time investment as well as significant disruption of existing processes. As such, PLM didn't fit smaller manufacturers' needs.

Unlike traditional PLM, ENOVIA SmarTeam has been developed with years of experience and expertise serving the mid-market; SmarTeam Engineering Express incorporates this knowledge in a cost-effective and quick-to-implement item-centric PLM engineering solution that fits the budget, time and resources of mid-market manufacturers.

#### **Express Your Vision**

As a mid-market manufacturer, you can take the quick, simple route to BOM/item management via this affordable PLM solution that accelerates product launches and decreases the number and duration of costly change management processes. By applying embedded best-practices, Top-Down and Concurrent Engineering methodologies across the entire product lifecycle, from concept to manufacturing, you can improve productivity while maintaining low costs, high quality, standards and responsiveness to customer requirements.

The solution offers comprehensive management of the product structure, giving you a true multi-CAD advantage through integrations with the major CADs: CATIA (native integration, including LACD), Inventor, Solid Edge, SolidWorks, Pro/ENGINEER, AutoCAD and NX/I-deas as well as support for electronic CADs (EDA tools), software data management, MS Office documents and many other types of multi-disciplinary product data, as well as BOM import from MS Excel and export/import from/to ERP.

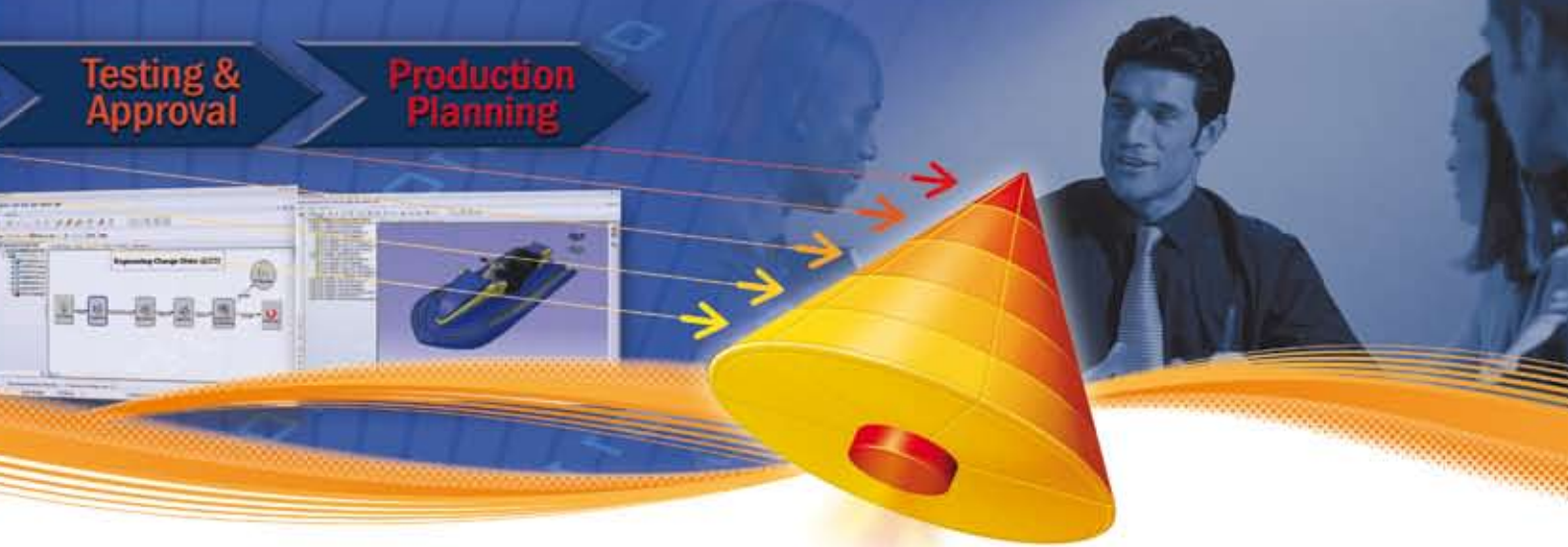
SmarTeam Engineering Express optimizes Engineering BOM (E-BOM) management from the concept phase, to planning, development, testing and through to Manufacturing BOM (M-BOM) creation and integration with ERP.

Preconfigured workflows such as Document Release, ECR and ECO accelerate the processes typical to collaborative product development. The prepackaged solution includes an easy user interface, a variety of "Express" tools and comprehensive documentation. Your entire team will quickly adopt the simple step-by-step methodology for optimizing day-to-day product development processes.

**Working together smarter, you will launch your products faster.**

#### **How will you benefit?**

- **Quick to implement; easy to learn** – with a small investment; low risk and simple deployment
- **Maximizes control of engineering processes** – with standardized business processes
- **Enhances collaboration** – with enhanced communication and accelerated product development for faster time-to-market
- **Improves accuracy** – with effective and fast reuse of existing data
- **Accelerates product launches** – with higher productivity at a lower cost; increased profitability and return on investment (ROI)



## Engineering Express Lets You Work Together Better to Launch Faster

Embedding Concept-to-Manufacturing, Top-down, and Concurrent Engineering Best Practices in one solution to help you be first to market

### Comprehensive End-to-end Solution from Concept to Manufacturing

Traditional processes are fraught with miscommunication, errors, and delays, especially when managing many products simultaneously. ENOVIA SmarTeam helps you manage several linear processes simultaneously and comprehensively. Guide your products from concept through manufacturing with a set of tools that optimizes product development processes across each of the stages: Concept, Planning, Development, Testing and Production Planning, through to Release to Manufacturing.

### Concentrated Top-down Engineering

With this approach, you initiate new product launches top-down, bringing the concept and product overview to the team first, before beginning design. Later, the concept is broken down into different components and then designed from the bottom up. The top-down approach keeps your team focused on the initial product definition and lets you concentrate on your devised plan.

### Collaborative Concurrent Engineering

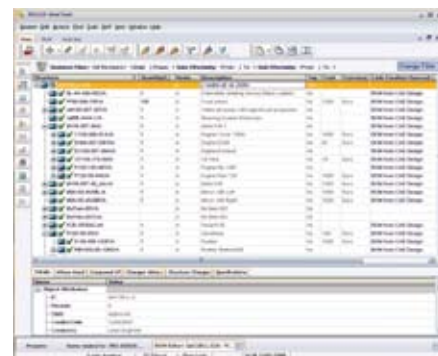
All the members of your team work around each product's centrally accessed Engineering BOM (E-BOM) from the start, carrying out their tasks concurrently, updating the items that make up the E-BOM, so that each aspect of product development is managed in context of the others. Team collaboration around an accurate, up-to-date, shared E-BOM for each product, at every phase of the lifecycle, prevents the need for numerous, lengthy and costly change management processes often arising close to deadline.

**“(We) have introduced a flexible ENOVIA SmarTeam (Engineering Express)-based methodology that provides the tools to efficiently manage all future business expectations”**

Mat Burgess, Development Manager, Solarcentury, UK

#### Key Features

- **Out-of-the-box, modular Express portfolio** offers broad PLM coverage all on one platform
- **Item/BOM-centric approach**
- **Engineering Best Practices and Change Management**
- **Synchronization of multiple product data types**
- **Flexible and scalable for phased implementation approach**
- **Launchpad to Dassault Systèmes' PLM 2.0 technology (V6)** – SmarTeam Engineering Express smoothly integrates with 3DLive for a uniquely life-like data navigation experience, preparing you for a PLM 2.0 environment and simplifying transition to V6



**BOM Editor**